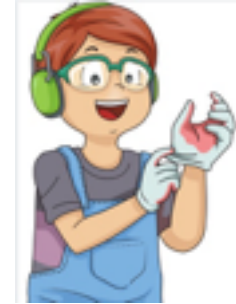


PPE

Your **PPE** must **be worn properly** to be effective.



You are responsible for your PPE and must **maintain it properly** and leave it in a **safe place**.



Your PPE **should not be left** in common areas.



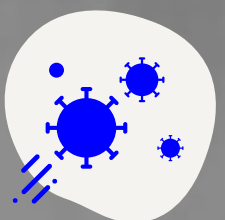
Even if you wear gloves, you should **not touch your face**; try to touch surfaces as little as possible.

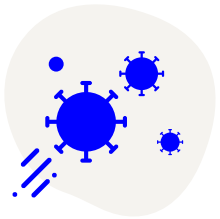


You should **throw away** your disposable gloves and mask in an **appropriate wastebasket**.



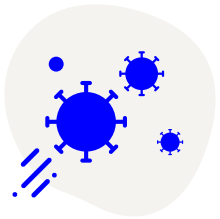
After each time you use your PPE, you should always **wash your hands** for at least 20 seconds while singing the chorus of «Staying Alive»!





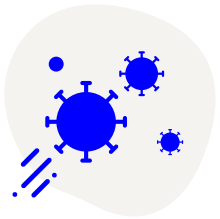
**STOP!
DID YOU
TAKE OFF
YOUR PPE?**





**DO NOT TOUCH
YOUR FACE EVEN
IF YOU HAVE
A MASK AND
GLOVES ON!**

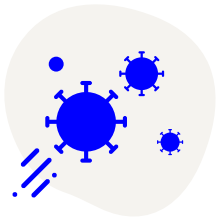




**IS YOUR PPE IN
GOOD CONDITION?**

**ASK SOMEONE
IN CHARGE TO
CHANGE THEM!**





**ARE YOU
COUGHING?**

**DO YOU HAVE
A FEVER?**

**ANY TROUBLE
BREATHING?**

**IMMEDIATELY
NOTIFY YOUR
MANAGER.**
